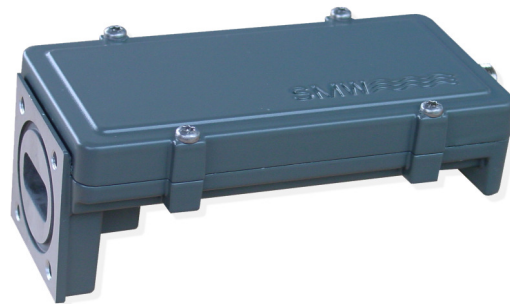


SMW LNB DRO



Low phase noise single band DRO LNB

The extremely low phase noise ensures the lowest possible BER. Comes standard with Low Noise Figure and F-connector output.

All our LNBs are individually hand tuned to get the very best performance available for each unit. Quality and long term reliability is also essential. Therefore are all LNBs tested according to a very extensive test program, which includes heating, cooling, water-proof testing and rigorous electrical testing.

Swedish Microwave (SMW) was founded 1986 and is today a leading manufacturer of professional LNBs (Low Noise Blockdownconverters). The company is located in Motala Sweden, and to date the products are installed in more than 80 countries.

All work is in-house allowing custom-design products, short delivery times, high flexibility, quick service and support.

Specification SMW LNB DRO

SMW

Frequency range
LO frequency
Output frequency

LNB DRO 9.75

10.7 - 11.8 GHz
9.75 GHz
950 - 2050 MHz

LNB DRO 10.0

10.95 - 12.1 GHz
10.0 GHz
950 - 2100 MHz

LNB DRO 10.6

11.7 - 12.75 GHz
10.6 GHz
1100 - 2150 MHz

SMW

Frequency range
LO frequency
Output frequency

LNB DRO 10.75

11.7 - 12.75 GHz
10.75 GHz
950 - 2000 MHz

LNB DRO 11.3

12.25 - 12.75 GHz
11.3 GHz
950 - 1450 MHz

General specification

Gain typical
Gain variation

Noise Figure, typical
LO stability (over temp.)
Age drifting
LO Phase noise typical

SMW LNB DRO

54 dB
±3 dB within band
±0.3 dB within 30 MHz

0.8 dB
±3 MHz (for better LO stability see PLL ±250 kHz)
±500 kHz/year
-75 dBc @ 1 kHz
-85 dBc @ 5 kHz
-95 dBc @ 10 kHz
-110 dBc @ 100 kHz
-120 dBc @ >1 MHz

-60 dBm
50 dB min
+5 dBm
+15 dBm
WR-75 waveguide
F-connector 75 ohm
2.0:1
12 - 24 V
145 mA typ
-30 to +60°C
-40 to +80°C
122 x 56 x 44 mm
220 g (F), 236 g (N)

LO radiation
Image rejection
1 dB gain compression point
IP3
Input
Output Waterproof
Output VSWR
DC power

Operating temperature
Storage temperature
Dimensions
Weight

Enclosed accessories

O-ring
Screw M4 x 8 4 pcs

SMW
SWEDISH MICROWAVE AB

Box 230
591 23 MOTALA, SWEDEN
Tel. +46 141 21 61 35
Fax. +46 141 21 52 24
e-mail: info@smw.se
Website: <http://www.smw.se>

